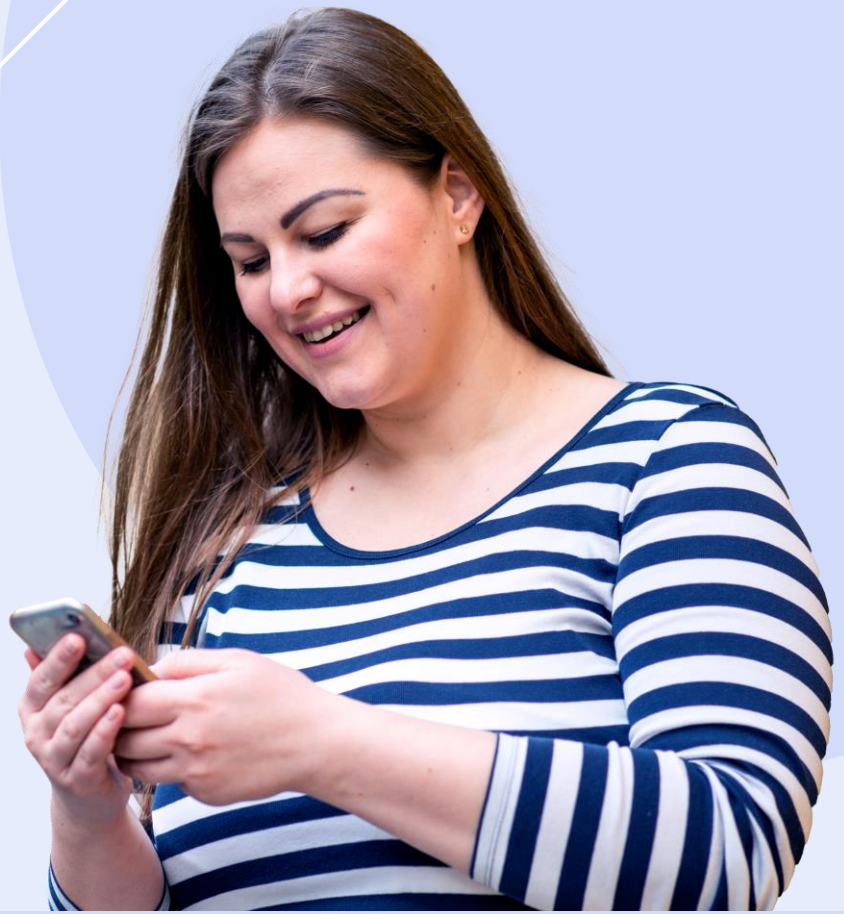


Integrated Benefits

Chronic Care




Device-Agnostic Care Management

A digital solution supporting patients with diabetes, prediabetes, hypertension, heart failure, and behavioral health issues by delivering intelligent, real-time coaching at scale.



Product Highlights



	<p>Care Team Coordination</p> <p>Patients can communicate with their care teams about their care progress and share real-time data and reports.</p>		<p>Artificial Intelligence</p> <p>AI engine learns and adapts to user inputs and provides real time messages to ensure precise coaching.</p>		<p>Medical Device Integrations</p> <p>Device agnostic solution that can sync with hundreds of medical devices and trackers (like Fitbit) and import lab and pharmacy data.</p>
---	--	---	---	---	---



- ✓ Health Data Tracking
- ✓ Intelligent Coaching
- ✓ Evidence-Based Care Model
- ✓ Care Team Messaging
- ✓ Educational Resources



\$3K+

Did you know?

Chronic Care saves an average of over \$3,000 annually per patient with type two diabetes.

Digital
Medical
Home

NEXTGEN CARE

BENEFITS

Product Details

Health Data Tracking

From medical device integrations to symptom tracking, patient data ensure care is personalized and effective

Intelligent Coaching

AI-based algorithms learn patient preferences, needs and patterns to deliver the right advice at the right time

Evidence-Based Care Model

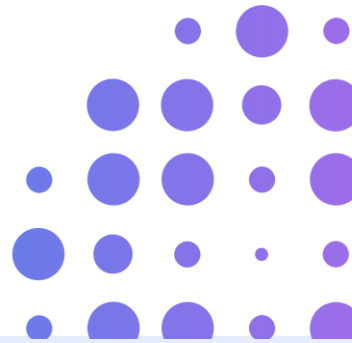
The digital care management platform is clinically proven and scientifically backed to deliver the best results

Care Team Messaging

An integrated messaging tool ensures each patient's dedicated care team can provide ongoing guidance

Educational Resources

Disease-specific curriculum, videos, and articles are presented to patients based on their specific needs



Product Details



Diabetes

Coaching messages and content supporting self-management.



Hypertension

Tracking and coaching for blood pressure and lifestyle management.



Prediabetes

A Digital CDC PreventT2 Program.



Behavioral Health

Work through common challenges with a customized action plan.



Heart Failure

Symptom tracking to improve quality of life and reduce hospitalization.

