

NextGen Care

# Virtual Primary Care

## Whole-Person Virtual Care

Top primary care physicians to provide personalized care through message-based and video interactions, no matter your location or circumstance.



**RECURO**  
HEALTH

- ✓ Dedicated Physician
- ✓ At-Home Labs
- ✓ Integrated Prescriptions
- ✓ Health Risk Assessment
- ✓ Genetic Testing
- ✓ Integrated Urgent Care
- ✓ Condition Management
- ✓ Behavioral Health

## Product Highlights



### Comprehensive

An integrated care team of board-certified primary care and behavioral health physicians enables whole-person care with a personal touch.



### Convenient

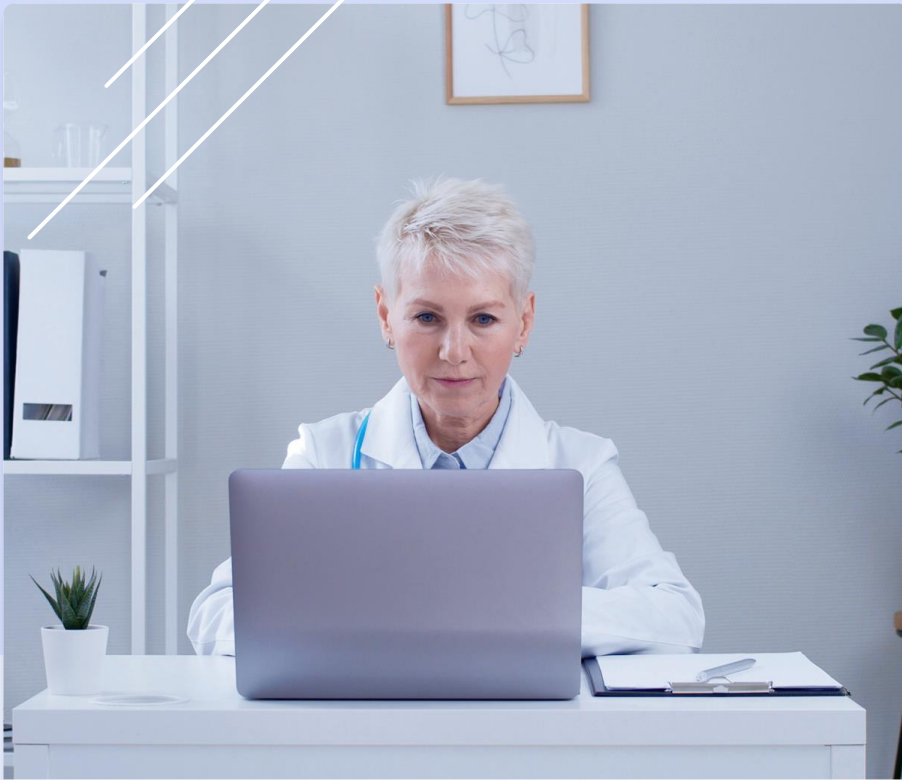
Patients receive lab and genomic testing kits shipped to their doorsteps, self-collect their samples, and mail them to the lab, all from the comfort of their homes.



### Preventative

A proactive approach that includes at-home labs, genomics, and risk stratification enables early intervention to improve patient experience and outcomes.





**Digital  
Medical  
Home**

NEXTGEN CARE

BENEFITS

## Conditions Treated

- Allergic Conditions
- Diabetes
- High Cholesterol
- Hypertension
- GI Tract Issues
- Prediabetes
- Respiratory Illness
- Arthritis
- Anemia
- Cold
- Flu
- Rashes
- UTIs
- And More

## Product Details

### Dedicated Physician

Patients can choose a consistent provider who meets their needs and preferences.

### Integrated Prescriptions

Prescriptions are immediately sent to the patient's preferred pharmacy for easy pickup.

### Genetic Testing

Targeted genetic testing to identify elevated risk for hereditary cancers and other inherited conditions.

### Condition Management

Care teams identify and manage chronic conditions on an ongoing basis.

### At-Home Labs

Lab tests are delivered to patients' doorsteps, easily returned to the lab in prepaid packages.

### Health Risk Assessment

a comprehensive risk assessment covers physical and behavioral health, lifestyle, and other areas.

### Integrated Urgent Care

24/7 urgent care access is included in the primary care solution.

### Behavioral Health

Primary care and behavioral health can be integrated to provide holistic patient care.



Up to  
**\$500**

## Did you know?

Patients can save between \$400 - \$500 in episodic savings per consultation.

