

NextGen Care

# Virtual Primary Care

CORE

Top primary care physicians to provide personalized care through message-based and video interactions, no matter your location or circumstance.



**RECURO**  
HEALTH

- ✓ Dedicated Physician
- ✓ Primary Care Services
- ✓ Electronic Prescription Ordering
- ✓ Health Risk Assessment
- ✓ Integrated Urgent Care
- ✓ Chronic Care Management

## Product Highlights



### Comprehensive

An integrated care team with board-certified primary care physicians enables whole-person care with a personal touch.



### Convenient

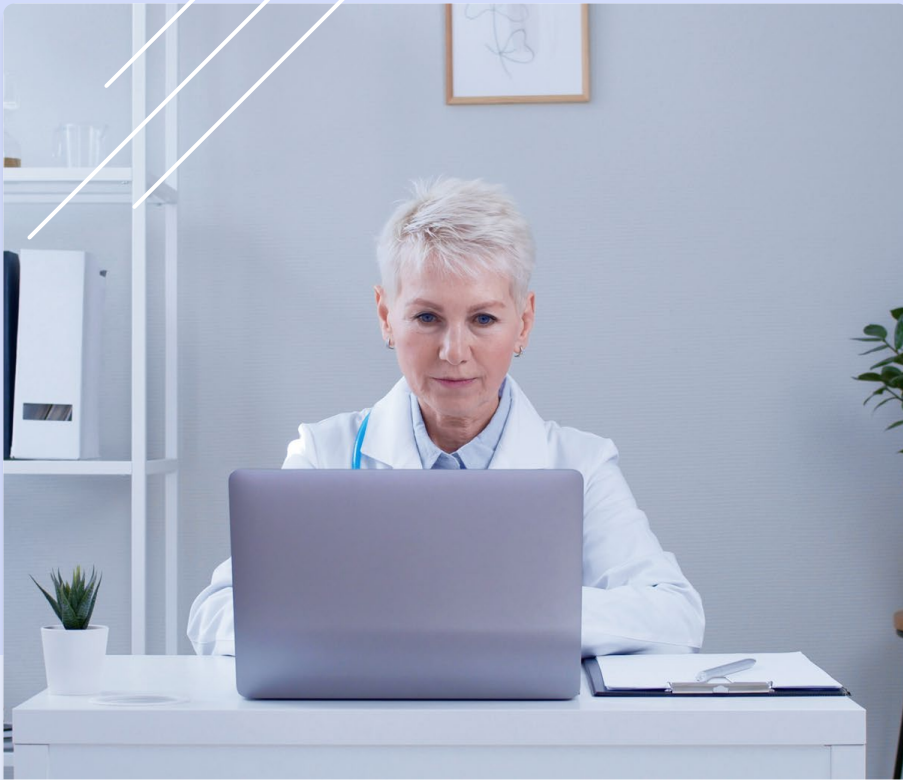
Market-leading patient access means no long appointment waits or barriers to accessing care.



### Preventative

A proactive approach that includes risk stratification enables early intervention to improve patient experience and outcomes.





Digital  
Medical  
Home

NEXTGEN CARE

BENEFITS

## Conditions Treated

- Prediabetes / Diabetes
- Hypertension
- High Cholesterol
- Obesity Management
- GI Tract Issues
- Respiratory Illness
- Arthritis
- Allergic Conditions
- UTIs / Vaginitis
- Anemia
- Cold / Flu
- Rashes

## Product Details

### Dedicated Physician

Patients can choose a consistent provider who meets their needs and preferences.

### Primary Care Services

Annual wellness exam, health risk assessment review, follow-up visits, care plan development and ongoing support, chronic condition management, post-visit lab ordering and review, and specialist coordination.

### Electronic Prescription Ordering

Prescriptions are immediately sent to the patient's preferred pharmacy for easy pickup

### Health Risk Assessment

A comprehensive risk assessment covers physical and behavioral health, lifestyle, and other areas.

### Integrated Urgent Care

24/7 urgent care access is included in the primary care solution.

### Chronic Care Management

Care teams identify and manage chronic conditions on an ongoing basis



Up to  
**\$500**

## Did you know?

Patients can save between \$400 - \$500 in episodic savings per consultation.

